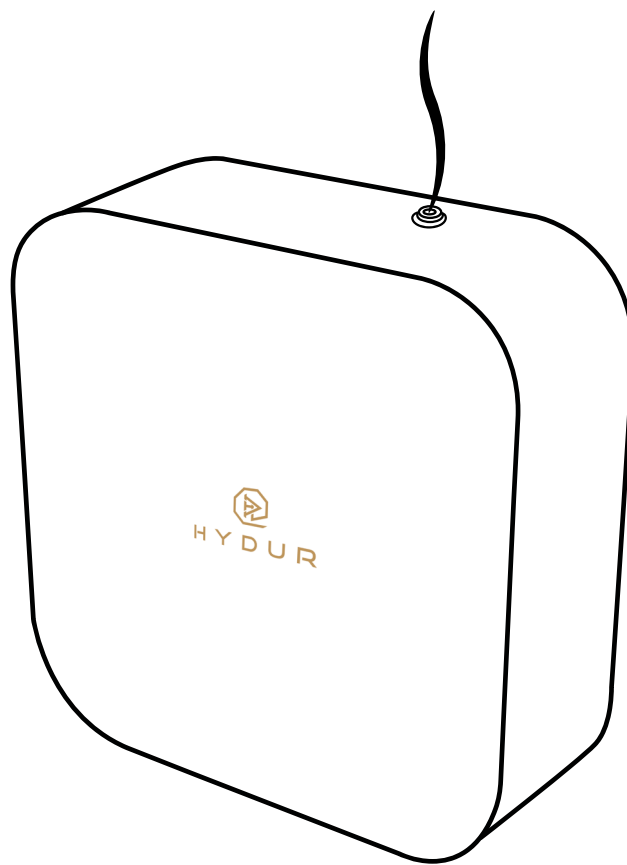


# THE GRANDI SQUARE DIFFUSER MANUAL

**Before using:** For Your safety, please read and understand this manual before using your product.



Twenty Automatic Scent  
Intensity Levels



Button  
Operated



Bluetooth  
Controlled



Timer  
Programming

## Specification

---

**Product Name:** Hydur, The Grandi Square diffuser black/silver

**Coverage:** 150m<sup>2</sup> /450m<sup>3</sup>/15900ft<sup>3</sup>

**Dimensions:** (H) 205 mm x (W) 205 mm x (D) 88 mm

**Net weight:** 0.58 kg

**Gross weight:** 3.30 kg

**Oil Consumption:** 0.08ml - 1.20ml per hour

**Power:** 6.0 Watts

**Voltage:** DC12V

**Container capacity:** 480 ml

**Accessories:** Power adapter

**Charging time:** 480 ml oil lasts up to 3 months

**Environment:** Indoor



Waste electrical products should not be disposed of with house hold waste. Separate disposal facilities exist, for your nearest facilities see [www.recycle-more.co.uk](http://www.recycle-more.co.uk)

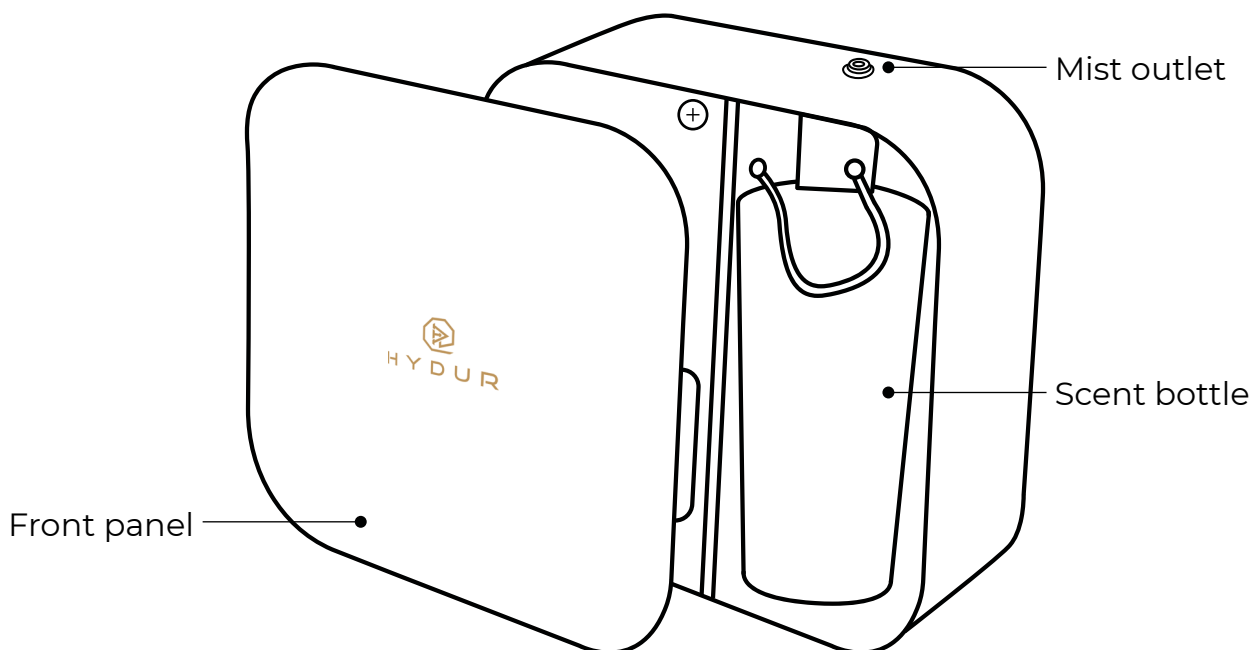
## Specification

---

Our Grandi Square is our most powerful machine which uses nebulisation technology makes it ideal for large spaces. Stylishly designed yet nimble to be part of an interior with minimal invasion space. With sufficient oil storage, this machine will diffuse for a long period of time before needing a refill.

Operated by Bluetooth using the Hydur scenting app, you are able to control your diffusion levels and set to continuous diffusion or set it based on your preferred time and day.

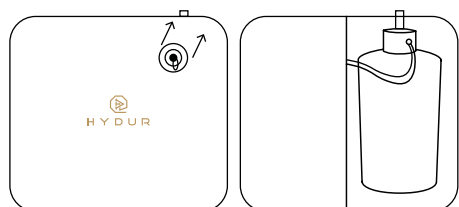
With a twenty-intensity diffusion setting, this diffuser is impeccable.



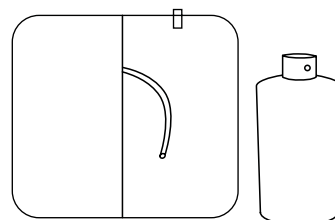
## Operating your diffuser

---

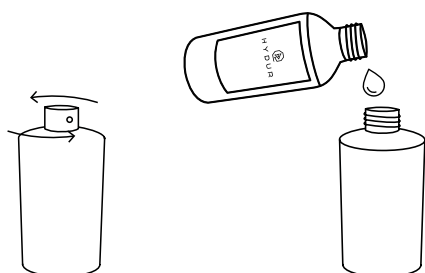
- 1 Press the suction cup firmly to the front case of the machine and remove the panel. In case the grip is not too strong, add a few drops of water for stronger grip.



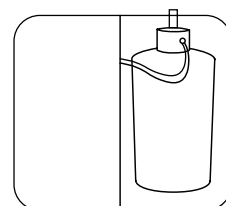
- 2 Remove the tube from the atomiser head first, holding the lower part of the bottle take it out of the machine, carefully lowering the atomiser head.



- 3 Unscrew the atomiser head from the bottle and fill with scented oil.



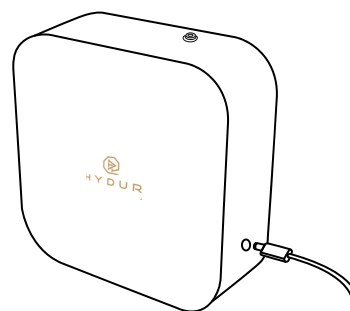
- 4 Screw the atomiser head back onto the bottle firmly.



- 5 Keep the machine upright and connect the tube back onto the atomiser head and securely place in machine and attach the front panel.



- 6 Plug in the power adapter to turn the machine ON, the machine will beep to indicate its ON and ready to operate.



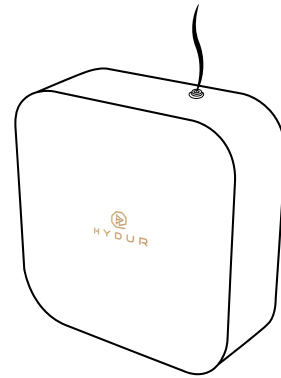
## Operating your diffuser

---

- 7 Adjust the desired intensity level by connecting to Bluetooth using the Hydur scenting app which allows you to control your diffusion levels and settings based on your preferred time and day. The Hydur Scenting controller app is available to download on IOS or android.



- 8 Place your Grandi Square Diffuser on a flat surface or mount it to the wall in your home, retail store, restaurant salon, meeting room, office, or any ventilated indoor space.

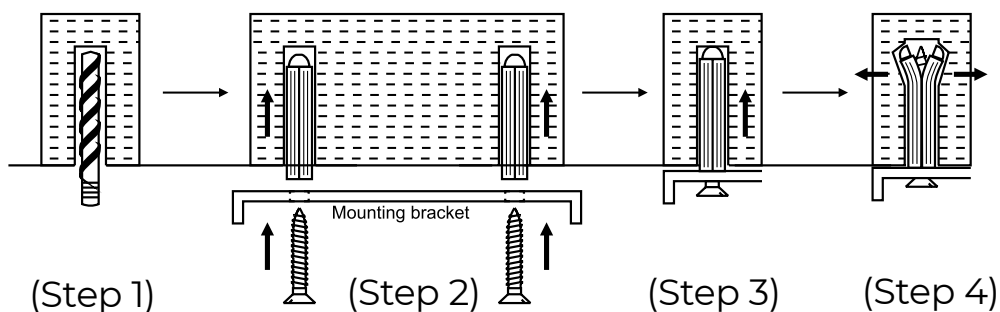


## Mounting Wall Bracket

---

### Wall Mounting the Grandi Square

1. Using a drill, make a hole in the drywall the size of the plug.
2. Insert the drywall plug. If needed, tap carefully with a hammer to fully insert the plug.
3. Screw the bracket to the wall aligning with drywall plugs.



## Power On

---

Connect the DC12V adapter to the outlet and turn the power switch On. Local time and scent intensity levels will appear.

## Intensity and Oil Consumption

---

Intensity Level Indicator Light	Length of Diffusion (in Seconds)	Interval between Diffusion (in Seconds)	Oil Consumption (ml/hr)
1	15	300	0.08
2	15	150	0.14
3	20	120	0.21
4	20	85	0.27
5	25	80	0.33
6	30	75	0.40
7	30	60	0.46
8	30	50	0.52
9	30	40	0.58
10	30	33	0.65
11	33	30	0.71
12	40	30	0.76
13	50	30	0.82
14	60	30	0.87
15	75	30	0.93
16	80	25	0.98
17	85	20	1.04
18	120	20	1.09
19	150	15	1.15
20	300	15	1.20

## Warning

---

Please read and follow all instructions

- This product is a household or commercial electrical appliance
- After installation, please keep the diffuser on a stable horizontal surface, or mount it to the wall do not tilt or angle as this will cause oil leakage and may damage the machine
- Turn the diffuser off before adding any oil
- For your safety and quality assurance, we strongly advise do not disassemble or repair the machine as this will void the warranty and will damage the machine
- Only use Hydur purchased scented oil. Any other oil will void the warranty and might damage the machine
- Only use the power adapter supplied with the device
- Do not install or use within the reach of children or pets. Doing so may lead to the product tipping over or in other accidents cause injury
- Do not submerge or pour / splash water on this product or its cable, doing so may lead to electric shock or injury
- Never attempt to insert pins, wires or other foreign objects in the mist diffuser outlet, doing so may lead to shock or injury
- Do not use damaged power adapter or charging when moisture is present, can cause fire, electric shock, injury or damage to the diffuser
- Do not allow children to play with this appliance
- If there is a spill due to tipping over or tilting , do not allow it to come comes in contact with the internal outlet or charging port as it can result in malfunction or may lead to shock or injury
- Please do not use the diffuser, if there is no scented oil

## Care/Storage

---

For your safety, regularly perform care and maintenance for your scent diffuser,

- If scenting oil comes into contact with the outer cover or inner cover, or the cover becomes dirty, wipe it off with a clean cloth soaked with warm water and wipe with a dry cloth
- Using the diffuser without regular cleaning may result in mineral build up resulting in degraded performance

## Storage

---

- Do not store this product in a location subject to high temperature or humidity
- Before using this product after a period of storage, clean the interior with a dry cloth to remove any dust particles

It is recommended to perform the following procedure to clean your diffuser to prevent clogging, and ensure product quality and performance. We advise run once a month with Isopropyl alcohol for 15 mins

## Cleaning Steps

---

- Always turn the diffuser off and unplug the device during maintenance
- Unscrew the bottle and replace the scenting oil with Isopropyl Alcohol
- Screw the bottle into the Diffuser and let it run for 10-15 mins
- After running your cleaning cycle, replace the Isopropyl Alcohol with scenting oil

## Disposal

---

Dispose of this product and packaging materials with your local regulation. Waste electrical products should not be disposed with household waste. Separate disposal exist for your nearest facilities, see [www.recycle-more.co.uk](http://www.recycle-more.co.uk)



## Troubleshooting

Incase of any problem, please try the below steps to diagnose the problem and fix the issue.

Condition	Possible Reason	Solution
Diffuser is not working	<ol style="list-style-type: none"><li>1. Diffuser is not connected to the power outlet</li><li>2. Faulty power supply adapter</li></ol>	<ol style="list-style-type: none"><li>1. Check if the Diffuser is connected to power</li><li>2. Replace power supply adapter</li></ol>
The Diffuser is not diffusing, can't hear the air pump working	<ol style="list-style-type: none"><li>1. Diffuser is in pause/ rest mode between cycles. Standard rest mode is 300 seconds On and 30 seconds Off</li><li>2. Pump failed</li></ol>	<ol style="list-style-type: none"><li>1. Wait for the Diffuser to turn back on by itself after the 300 seconds On and 30 seconds Off cycle</li><li>2. Replace pump</li></ol>
Diffuser is working but no mist is visible and/or can't smell the scent.	<ol style="list-style-type: none"><li>1. Diffuser core is clogged</li><li>2. Diffuser is in pause/ rest mode</li></ol>	<ol style="list-style-type: none"><li>1. Replace oil with rubbing alcohol and run through the diffuser for 15 min. If that doesn't work contact us</li><li>2. Wait for Diffuser to turn back on by itself</li></ol>
Unusual and loud noise	Pump is damaged	Contact us
Oil is leaking	<ol style="list-style-type: none"><li>1. Make sure the Diffuser is always upright</li><li>2. Seal is broken, missing or damaged</li><li>3. Bottle is not screwed in straight and firm</li></ol>	<ol style="list-style-type: none"><li>1. If the Diffuser tipped, stand it upright</li><li>2. Change the rubber seal</li><li>3. Make sure the bottle is screwed in straight and snug</li></ol>